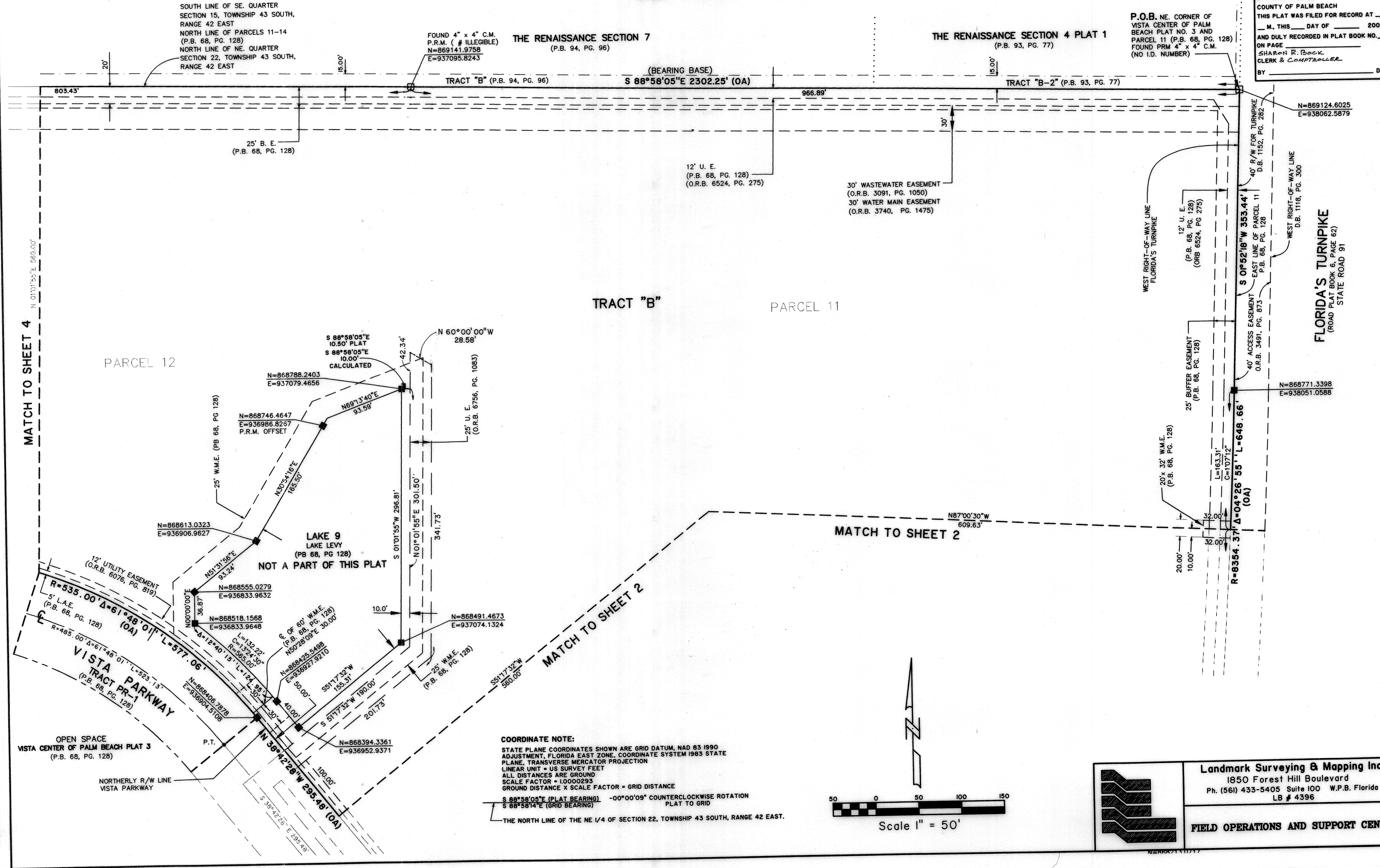
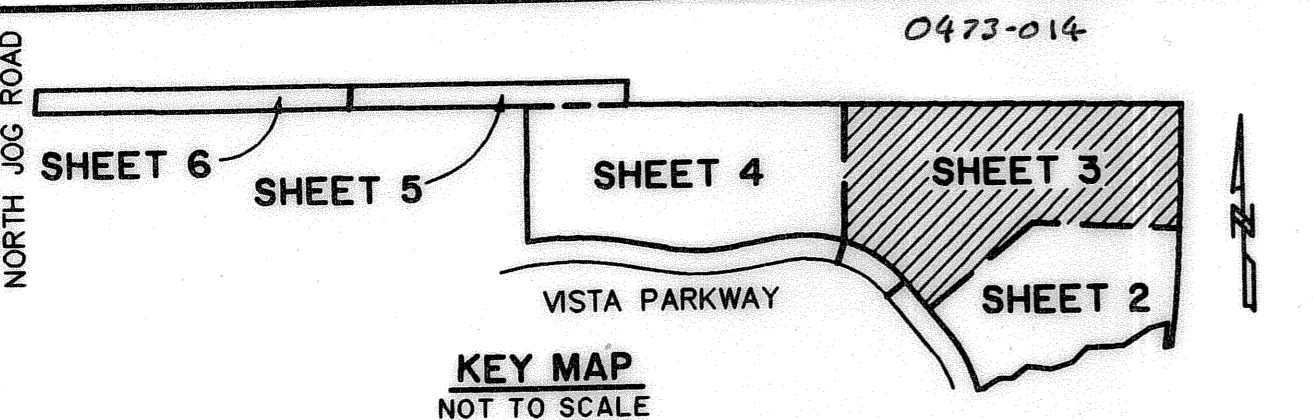


# FIELD OPERATIONS AND SUPPORT CENTER

A PORTION OF A PLANNED INDUSTRIAL PARK DEVELOPMENT  
 BEING A PORTION OF SECTION 15, TOWNSHIP 43 SOUTH, RANGE 42 EAST, AND A  
 REPLAT OF PARCELS 10, 11, 12, 13 AND 14, VISTA CENTER OF PALM BEACH PLAT 3, AS RECORDED  
 IN PLAT BOOK 68, PAGES 128 THROUGH 134, PUBLIC RECORDS OF PALM BEACH COUNTY, FLORIDA.  
 LYING IN SECTIONS 15 AND 22, TOWNSHIP 43 SOUTH, RANGE 42 EAST, PALM BEACH COUNTY, FLORIDA.  
 SHEET 3 OF 6

107



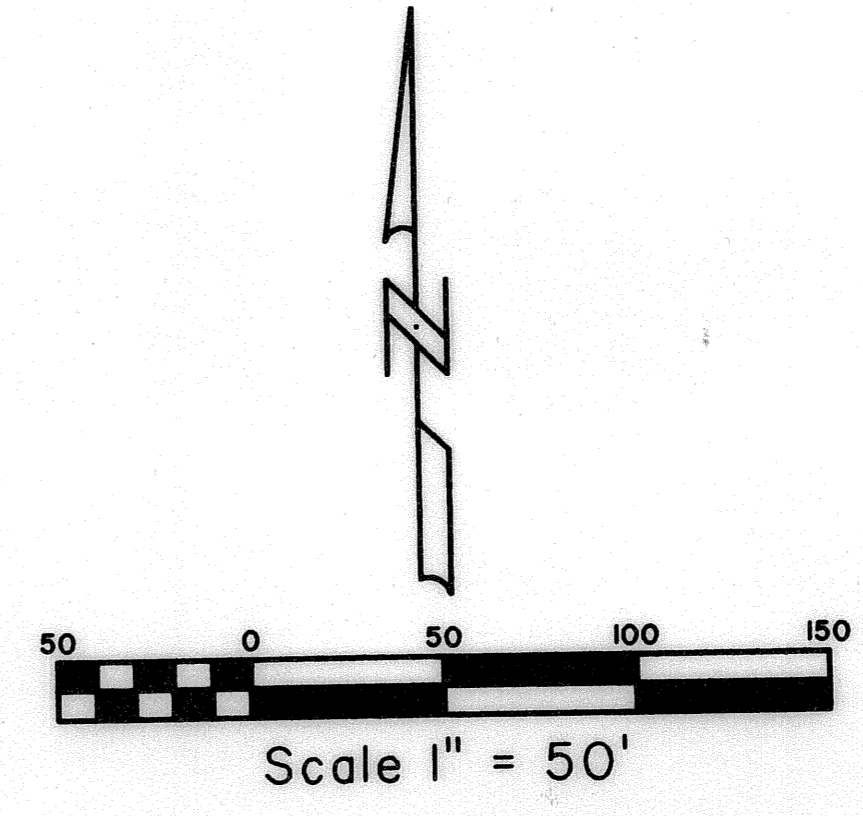
**TRACT "B-1"**  
 5' ACCESS EASEMENT  
 (P.B. 93, PG. 77)

**P.O.B. NE CORNER OF VISTA CENTER OF PALM BEACH PLAT NO. 3 AND PARCEL 11** (P.B. 68, PG. 128)  
 FOUND PERM 4" x 4" C.M. (NO I.D. NUMBER)

STATE OF FLORIDA SS  
 COUNTY OF PALM BEACH  
 THIS PLAT WAS FILED FOR RECORD AT \_\_\_\_\_  
 M. THIS \_\_\_\_\_ DAY OF \_\_\_\_\_ 2005  
 AND DULY RECORDED IN PLAT BOOK NO. \_\_\_\_\_  
 ON PAGE \_\_\_\_\_  
 SHARON R. BOCK  
 CLERK & COMPTROLLER  
 BY \_\_\_\_\_ D.C.

SUBDIVISION FIELD OPERATIONS AND SUPPORT CENTER  
 BOOK 107  
 FLOOD ZONE 40  
 QUAD # 021  
 SE  
 TALL 811  
 PUD NAME VISTA CENTER

**COORDINATE NOTE:**  
 STATE PLANE COORDINATES SHOWN ARE GRID DATUM, NAD 83 1990  
 ADJUSTMENT, FLORIDA EAST ZONE, COORDINATE SYSTEM 1983 STATE  
 PLANE, TRANSVERSE MERCATOR PROJECTION  
 LINEAR UNIT = US SURVEY FEET  
 ALL DISTANCES ARE GROUND  
 SCALE FACTOR = 1.0000293  
 GROUND DISTANCE X SCALE FACTOR = GRID DISTANCE  
**S 88°58'05"E (PLAT BEARING)** --00°00'09" COUNTERCLOCKWISE ROTATION  
**S 88°58'14"E (GRID BEARING)** PLAT TO GRID  
 THE NORTH LINE OF THE NE 1/4 OF SECTION 22, TOWNSHIP 43 SOUTH, RANGE 42 EAST.



**Landmark Surveying & Mapping Inc.**  
 1850 Forest Hill Boulevard  
 Ph. (561) 433-5405 Suite 100 W.P.B. Florida  
 LB # 4396

FIELD OPERATIONS AND SUPPORT CENTER